

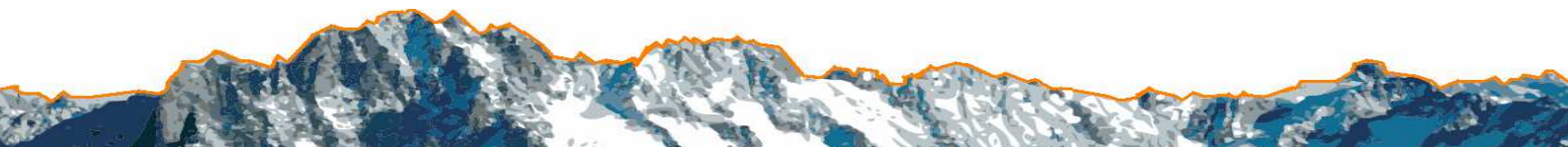
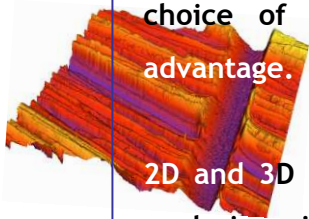


## ALTISURF<sup>®</sup> 500:

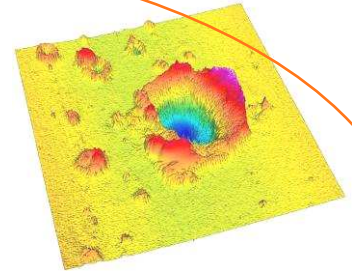
- CONTACT AND NON-CONTACT METROLOGY
- STROKE: 100x100mm
- RANGE FROM 100µm to 27mm
- VERTICAL RESOLUTION DOWN TO 5nm
- MANY SURFACE ANALYSIS TOOLS

Because your company has **top-class** standards, surface characterization and topographic analysis are key factors for your **success**. With the **Altisurf<sup>®</sup> 500**, the reference product in the surface metrology market, you can measure with or without contact along with the choice of 5 different built-in **Altiprobe<sup>®</sup>** sensors that will give you the decisive advantage.

2D and 3D surface characterization, functional parameters, 2D roughness analysis, form analysis, micro dimensions in Z, 2D or 3D form deviation, texture direction or distance measurement are just an overview of all the potential that the **Altisurf<sup>®</sup> 500** will bring into your company.



## ALTISURF<sup>®</sup> 500



<b>General specifications</b>	
Stroke X,Y, Z (mm)	100 x 100 x 100 (motorized)
Encoder Resolution (µm)	0.5 (0.1 in option)
Profile Straightness	Up to 0.4 µm x 100 mm
Dimensions (mm)	L500 x W540 x H730
Weight (kg)	110
Effective capacity (kg)	10
<b>PheNIX technology inside</b>	Technology developed by Altimet <sup>®</sup> on standard components basis. Allows consistent results between laboratory and production line measurements
Max. measurement speed	30 mm / s
<b>Probe</b>	AltiProbe <sup>®</sup> CLA
<b>Principle</b>	White light CLA (Chromatic Light Aberration)
<b>Range</b>	Large range of probes from 100 µm to 27 mm
<b>Vertical resolution</b>	5 to 600 nm (accuracy: 20 nm to 3µm)
<b>Lateral resolution</b>	up to 1.1 µm
<b>Frequency</b>	up to 30 KHz
<b>Probe</b>	AltiProbe <sup>®</sup> Laser scanning
<b>Principle</b>	Triangulated laser
<b>Range</b>	10 mm
<b>Vertical resolution</b>	1 µm
<b>Lateral resolution</b>	15 µm
<b>Probe</b>	AltiProbe <sup>®</sup> Inductive
<b>Principle</b>	Inductive pick-up with standard or specific designed styluses
<b>Range</b>	150 µm to 1.5mm
<b>Vertical resolution</b>	2 to 60 nm
<b>Lateral resolution</b>	2 µm stylus radius 60° or 90° or customized
<b>Probe</b>	AltiProbe <sup>®</sup> Micro Force
<b>Principle</b>	Microforce cantilever sensor: inf. 1mg, Tungsten microprobe Ø 60 µm, radius 2 µm
<b>Range</b>	100 µm to 3 mm
<b>Vertical resolution</b>	5 to 75 nm
<b>Lateral resolution</b>	2 µm stylus radius
<b>Miscellaneous</b>	
<b>Analysis software</b>	Altimap <sup>®</sup> suite: Lab to line interface (control card). Self macro analysis
<b>CCD Camera (in option)</b>	Observation and selection of the measured zone. Zoom up to x1200

The Altisurf<sup>®</sup> 500 allows you to study the relationships between surface statements and performances -or quality- expectations (Functionality, aspect, ageing, wearing, porosity, adherence...)

Thanks to 15 years of experience on the surface metrology market, we have for core values a great knowledge of our customer's activity and the ability to efficiently meet his needs.

Copyright © ALTIMET SAS 2008 - All rights reserved - Photos and specifications are non-binding

### Your Contact:

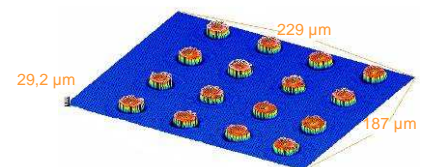
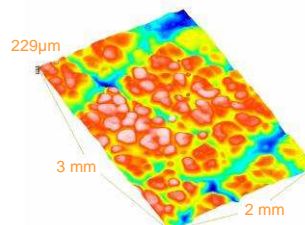
#### Altimet SAS

Immeuble le Président  
1 bis Avenue des Tilleuls  
F - 74200 THONON LES BAINS  
Tel: +33 (0)450 818 888  
Fax: +33 (0) 450 818 540  
altimet@altimet.fr  
www.altimet.fr

### Main fields of application:

Chemistry-Material Study

Nanotech Packaging Development



Mechanical Industry

Fibrous Matress, and much more...

