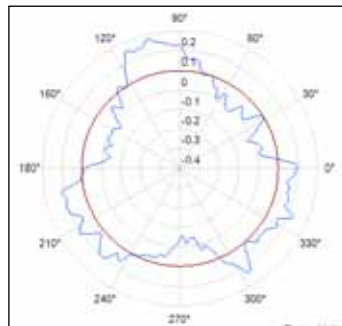


# CCI Roundness

Advanced 3D non-contact high speed cone measurement

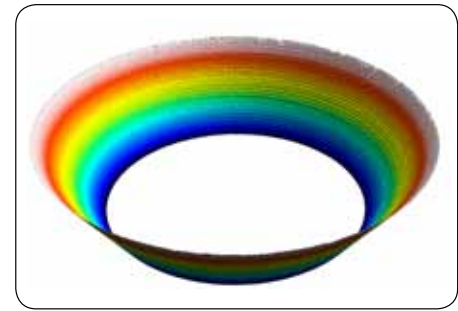


# CCI Roundness

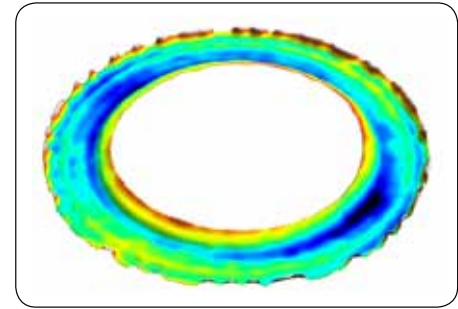
Fully automated 3D measurement and analysis, over the whole seat contact region

## Measurement and analysis

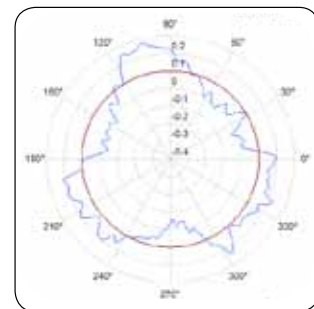
- CCI HD interferometer for high speed production control of cone injectors
- Cone angle, roundness, straightness and roughness analysis from one quick measurement
- Fully automated high speed measurement
- Measurement of multiple parts
- Unique cone angle and roundness analysis give excellent correlation with stylus instruments
- Suitable for wide range of applications



3D measurement of cone



Cone removed form variation



Roundness profile



## Benefits of interferometry

### High speed measurement

Increased sample throughput

### High resolution results

4 million pixel camera as standard

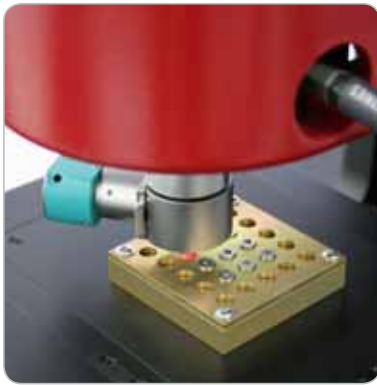
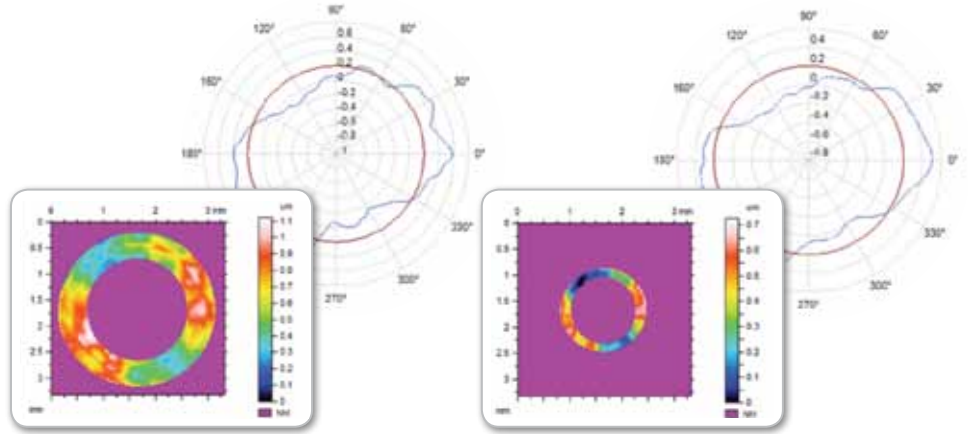
### Repeatable measurement results

Class leading low noise floor performance

### Two measurements from one instrument

## Cone angle and roundness analysis

CCI Roundness software automatically calculates cone angle and roundness values from a single 3D dataset enabling greater inspection flexibility and process control. Other analysis routines such as roughness and straightness are also available.

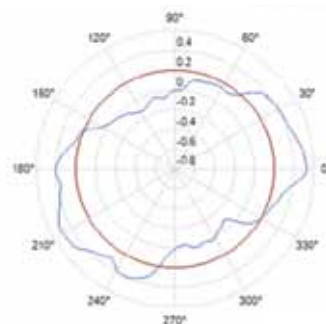


## High speed automation

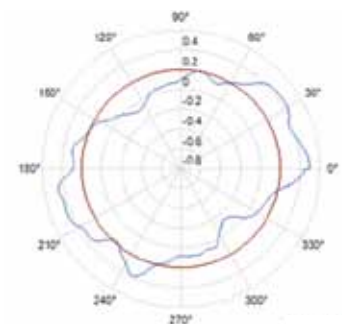
Developed to cope with the rigorous demands of high volume production whilst still being flexible enough to be used in batch inspection. Advanced automation routines allow multiple part measurement with no operator intervention, freeing operators to carry out other tasks. Capable of full cone angle and roundness inspection for 10 parts in less than 5 minutes.

## Correlation to Talyrond instrument for roundness measurement

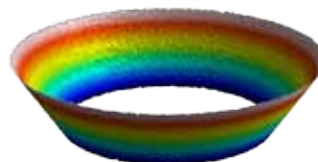
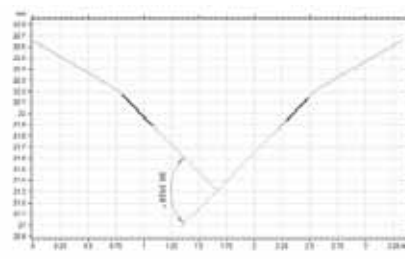
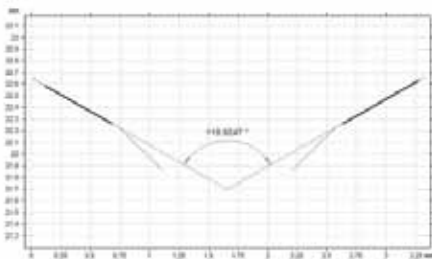
CCI roundness correlates with the world renowned Talyrond roundness instruments giving results that you can trust.



CCI Roundness



Talyrond



## Correlation to Talsurf PGI for cone angle measurement

CCI roundness also demonstrates excellent correlation with the PGI stylus profiler when measuring cone angle.

## Serving a global market

Taylor Hobson is world renowned as a manufacturer of precision measuring instruments used for inspection in research and production facilities. Our equipment performs at nanometric levels of resolution and accuracy.

To complement our precision manufacturing capability we also offer a host of metrology support services to provide our customers with complete solutions to their measuring needs and total confidence in their results.

Contracted Services from Taylor Hobson

- **Inspection services**  
measurement of your production parts by skilled technicians using industry leading instruments in accord with ISO standards
- **Metrology training**  
practical, hands-on training courses for roundness and surface finish conducted by experienced metrologists
- **Operator training**  
on-site instruction will lead to greater proficiency and higher productivity
- **UKAS Calibration and Testing**  
certification for artifacts or instruments in our laboratory or at customer's site

For the above services, contact our Center of Excellence:  
email: [taylor-hobson.cofe@ametek.com](mailto:taylor-hobson.cofe@ametek.com)  
or call: **+44 116 276 3779**

- **Design engineering**  
special purpose, dedicated metrology systems for demanding applications
- **Precision manufacturing**  
contract machining services for high precision applications and industries
- **Preventative maintenance**  
protect your metrology investment with a Tallycare service cover plan

For the above services, contact our Sales Department:  
email: [taylor-hobson.sales@ametek.com](mailto:taylor-hobson.sales@ametek.com)  
or call: **+44 116 246 2034**



0026

2624

### Taylor Hobson UK

(Global Headquarters)  
PO Box 36, 2 New Star Road  
Leicester, LE4 9JQ, England  
Tel: +44 116 276 3771 Fax: +44 116 246 0579  
email: [taylor-hobson.uk@ametek.com](mailto:taylor-hobson.uk@ametek.com)



### Taylor Hobson France

Rond Point de l'Épine Champs  
Batiment D, 78990 Elancourt, France  
Tel: +33 130 68 89 30 Fax: +33 130 68 89 39  
[taylor-hobson.france@ametek.com](mailto:taylor-hobson.france@ametek.com)



### Taylor Hobson Germany

Postfach 4827, Kreuzberger Ring 6  
65205 Wiesbaden, Germany  
Tel: +49 611 973040 Fax: +49 611 97304600  
[taylor-hobson.germany@ametek.com](mailto:taylor-hobson.germany@ametek.com)



### Taylor Hobson India

1st Floor, Prestige Featherlite Tech Park  
148, EPIP II Phase, Whitefield, Bangalore – 560 006  
Tel: +91 1860 2662 468 Fax: +91 80 6782 3232  
[taylor-hobson.india@ametek.com](mailto:taylor-hobson.india@ametek.com)



### Taylor Hobson Italy

Via De Barzi  
20087 Robecco sul Naviglio, Milan, Italy  
Tel: +39 02 946 93401 Fax: +39 02 946 93450  
[taylor-hobson.italy@ametek.com](mailto:taylor-hobson.italy@ametek.com)



### Taylor Hobson Japan

3F Shiba NBF Tower, 1-1-30, Shiba Daimon Minato-ku  
Tokyo 105-0012, Japan  
Tel: +81 (0) 3 6809-2406 Fax: +81 (0) 3 6809-2410  
[taylor-hobson.japan@ametek.com](mailto:taylor-hobson.japan@ametek.com)



### Taylor Hobson Korea

#310, Gyeonggi R&DB Center, 906-5, Iui-dong  
Yeongtong-gu, Suwon, Gyeonggi, 443-766, Korea  
Tel: +82 31 888 5255 Fax: +82 31 888 5256  
[taylor-hobson.korea@ametek.com](mailto:taylor-hobson.korea@ametek.com)



### Taylor Hobson China Beijing Office

Western Section, 2nd Floor, Jing Dong Fang Building (B10)  
No.10, Jiu Xian Qiao Road, Chaoyang District, Beijing, 100015, China  
Tel: +86 10 8526 2111 Fax: +86 10 8526 2141  
[taylor-hobson.beijing@ametek.com](mailto:taylor-hobson.beijing@ametek.com)



### Taylor Hobson China Shanghai Office

Part A, 1<sup>st</sup> Floor, No. 460 North Fute Road  
Waigaoqiao Free Trade Zone, Shanghai, 200131, China  
Tel: +86 21 5868 5111-110 Fax: +86 21 5866 0969-110  
[taylor-hobson.shanghai@ametek.com](mailto:taylor-hobson.shanghai@ametek.com)



### Taylor Hobson Singapore

AMETEK Singapore, 10 Ang Mo Kio Street 65  
No. 05-12 Techpoint, Singapore 569059  
Tel: +65 6484 2388 Ext 120 Fax: +65 6484 2388 Ext 120  
[taylor-hobson.singapore@ametek.com](mailto:taylor-hobson.singapore@ametek.com)



### Taylor Hobson USA

1725 Western Drive  
West Chicago, Illinois 60185, USA  
Tel: +1 630 621 3099 Fax: +1 630 231 1739  
[taylor-hobson.usa@ametek.com](mailto:taylor-hobson.usa@ametek.com)



[www.taylor-hobson.com](http://www.taylor-hobson.com)