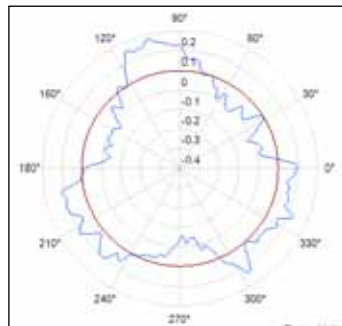


CCI Roundness

Advanced 3D non-contact high speed cone measurement

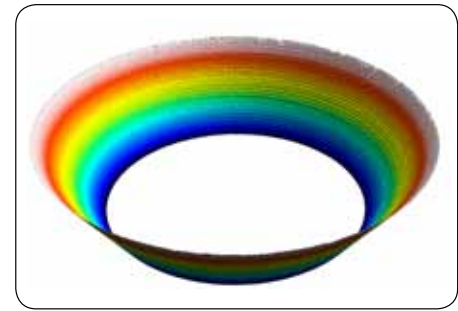


CCI roundness

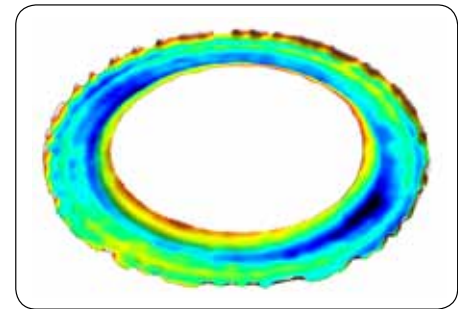
Fully automated 3D measurement and analysis, over the whole seat contact region

Measurement and analysis

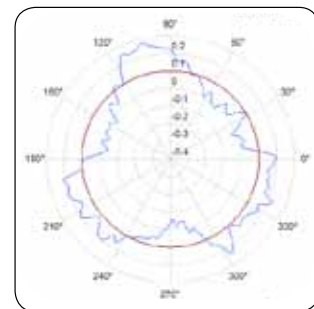
- CCI MP-HS interferometer for high speed production control of cone injectors
- Cone angle, roundness, straightness and roughness analysis from one quick measurement
- Fully automated high speed measurement
- Measurement of multiple parts
- Unique cone angle and roundness analysis give excellent correlation with stylus instruments
- Suitable for wide range of applications



3D measurement of cone



Cone removed form variation



Roundness profile



Benefits of interferometry

High speed measurement

Increased sample throughput

High resolution results

1 million pixel camera as standard

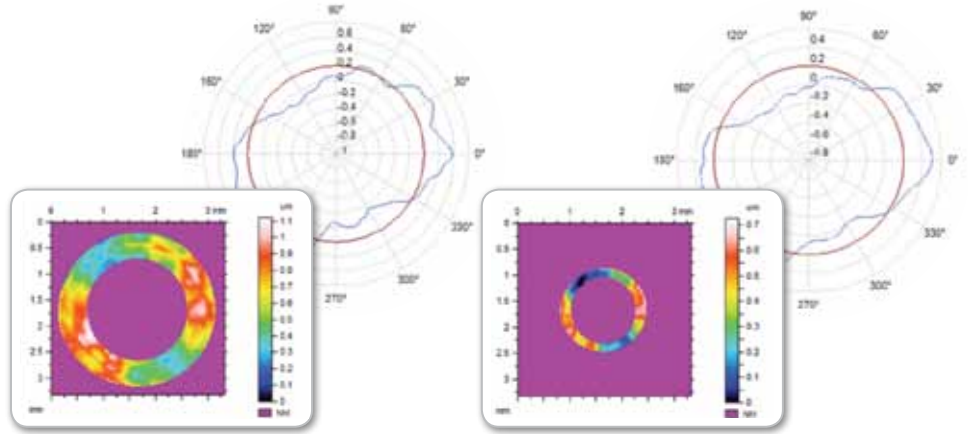
Repeatable measurement results

Class leading low noise floor performance

Two measurements from one instrument

Cone angle and roundness analysis

CCI Roundness software automatically calculates cone angle and roundness values from a single 3D dataset enabling greater inspection flexibility and process control. Other analysis routines such as roughness and straightness are also available.

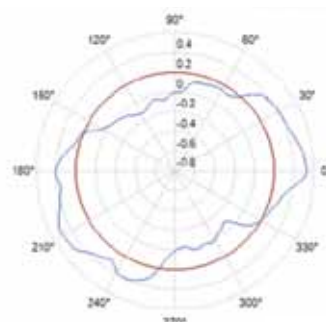


High speed automation

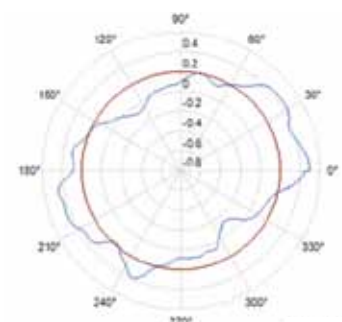
Developed to cope with the rigorous demands of high volume production whilst still being flexible enough to be used in batch inspection. Advanced automation routines allow multiple part measurement with no operator intervention, freeing operators to carry out other tasks. Capable of full cone angle and roundness inspection for 8 parts in less than 5 minutes.

Correlation to Talyrond instrument for roundness measurement

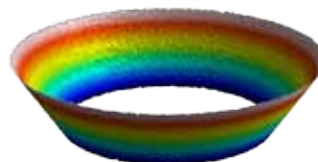
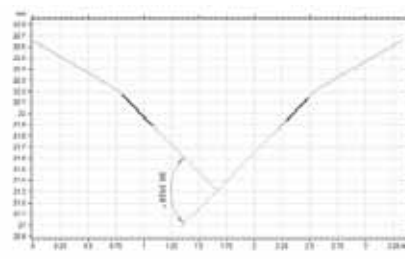
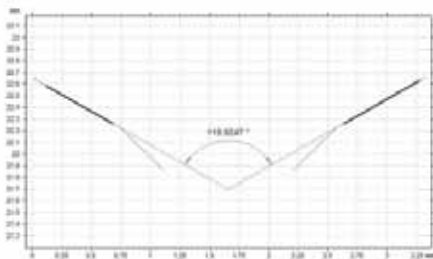
CCI roundness correlates with the world renowned Talyrond roundness instruments giving results that you can trust.



CCI Roundness



Talyrond



Correlation to Talysurf PGI for cone angle measurement

CCI roundness also demonstrates excellent correlation with the PGI stylus profiler when measuring cone angle.

Serving a global market

Taylor Hobson is world renowned as a manufacturer of precision measuring instruments used for inspection in research and production facilities. Our equipment performs at nanometric levels of resolution and accuracy.

To complement our precision manufacturing capability we also offer a host of metrology support services to provide our customers with complete solutions to their measuring needs and total confidence in their results.

Contracted services from Taylor Hobson

Sales department

Email: taylor-hobson.sales@ametek.com

Tel: +44 (0)116 246 2034

- **Design engineering**
special purpose, dedicated metrology systems for demanding applications
- **Precision manufacturing**
contract machining services for high precision applications and industries

Service department

Email: taylor-hobson.service@ametek.com

Tel: +44 (0)116 246 2900

- **Preventative maintenance**
protect your metrology investment with an Amecare support agreement

Centre of Excellence department

Email: taylor-hobson.cofe@ametek.com

Tel: +44 (0)116 276 3779

- **Inspection services**
measurement of your production parts by skilled technicians using industry leading instruments in accord with ISO standards
- **Metrology training**
practical, hands-on training courses for roundness and surface finish conducted by experienced metrologists
- **Operator training**
on-site instruction will lead to greater proficiency and higher productivity
- **UKAS calibration and testing**
certification for artifacts or instruments in our laboratory or at customer's site



0026

2624

Taylor Hobson UK

(Global Headquarters)

PO Box 36, 2 New Star Road
Leicester, LE4 9JQ, England

Tel: +44 (0)116 276 3771 Fax: +44 (0)116 246 0579
email: taylor-hobson.uk@ametek.com



Taylor Hobson France

Rond Point de l'Epine Champs
Batiment D, 78990 Elancourt, France

Tel: +33 130 68 89 30 Fax: +33 130 68 89 39
taylor-hobson.france@ametek.com



Taylor Hobson Germany

Postfach 4827, Kreuzberger Ring 6
65205 Wiesbaden, Germany

Tel: +49 611 973040 Fax: +49 611 97304600
taylor-hobson.germany@ametek.com



Taylor Hobson India

1st Floor, Prestige Featherlite Tech Park
148, EPIP II Phase, Whitefield, Bangalore – 560 006
Tel: +91 1860 2662 468 Fax: +91 80 6782 3232
taylor-hobson.india@ametek.com



Taylor Hobson Italy

Via De Barzi
20087 Robecco sul Naviglio, Milan, Italy

Tel: +39 02 946 93401 Fax: +39 02 946 93450
taylor-hobson.italy@ametek.com



Taylor Hobson Japan

3F Shiba NBF Tower, 1-1-30, Shiba Daimon Minato-ku
Tokyo 105-0012, Japan

Tel: +81 (0) 3 6809-2406 Fax: +81 (0) 3 6809-2410
taylor-hobson.japan@ametek.com



Taylor Hobson Korea

#310, Gyeonggi R&DB Center, 906-5, Iui-dong
Yeongtong-gu, Suwon, Gyeonggi, 443-766, Korea
Tel: +82 31 888 5255 Fax: +82 31 888 5256
taylor-hobson.korea@ametek.com



Taylor Hobson China Beijing Office

Western Section, 2nd Floor, Jing Dong Fang Building (B10)
No.10, Jiu Xian Qiao Road, Chaoyang District, Beijing, 100015, China
Tel: +86 10 8526 2111 Fax: +86 10 8526 2141
taylor-hobson.beijing@ametek.com



Taylor Hobson China Shanghai Office

Part A, 1st Floor, No.460 North Fute Road, Waigaoqiao
China (Shanghai) Pilot Free Trade Zone, 200131
Tel: +86 21 5868 5111-110 Fax: +86 21 5866 0969-110
taylor-hobson.shanghai@ametek.com



Taylor Hobson Singapore

AMETEK Singapore, 10 Ang Mo Kio Street 65
No. 05-12 Techpoint, Singapore 569059
Tel: +65 6484 2388 Ext 120 Fax: +65 6484 2388 Ext 120
taylor-hobson.singapore@ametek.com



Taylor Hobson USA

1725 Western Drive
West Chicago, Illinois 60185, USA
Tel: +1 630 621 3099 Fax: +1 630 231 1739
taylor-hobson.usa@ametek.com



www.taylor-hobson.com