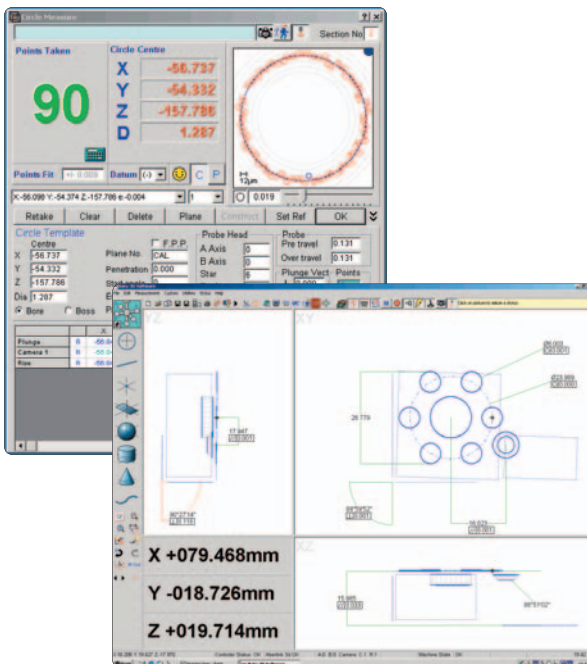


Model Number	X,Y,Z Measuring Range
VI-2010	200mm x 100mm x 160mm
VI-3030	300mm x 300mm x 160mm
VI-6040	600mm x 400mm x 160mm



## Venture

The newly designed Venture range covers three standard measuring ranges:

The VI-2010 has a 200mm x 100mm x 160mm X,Y,Z measuring capacity, the VI-3030 has 300mm x 300mm x 160mm and the VI-6040 has 600mm x 400mm x 160mm.

The aim is to bring together high-end software functionality with a proven mechanical design without increasing the price. With over 15 years experience as a manufacturer of vision systems and approaching 75 years in Metrology, Baty have built up a sound knowledge of vision applications requirements, whether manual or CNC, we believe the new Venture range now includes more functionality as standard than any other vision system package on the market.

### Standard system features include:

- 0,5 micron resolution for increased accuracy
- 6.5:1 zoom lens with optional adaptor allow you to select the optimum magnification for your part.
- High res. CCD camera with high definition colour image and image capture for slick reporting.
- Baty's new fully programmable white LED lighting system.
- Z axis dovetail slide mount for increased Z capacity.
- Auto Video edge detection with circle, arc, line and point tools as well as free form scanning tool. Take thousands of data points in seconds!
- Z axis measurement with Auto-focus for CNC or our new Focus meter (for manual systems)
- Profile scanning & best fit comparison to DXF file, immediate pass fail for complex shapes
- Produce fully dimensioned drawings of your measured part
- Full graphics and text reports
- SPC analysis including control charts
- Auto Excel link

### Options:

- Renishaw touch trigger probe for combined non-contact and contact measurement
- Steel machine stand with laminated top and integral pc/controller shelf
- Double monitor system for ease of use
- Laser scanning probe