

profile projectors – horizontal bench top

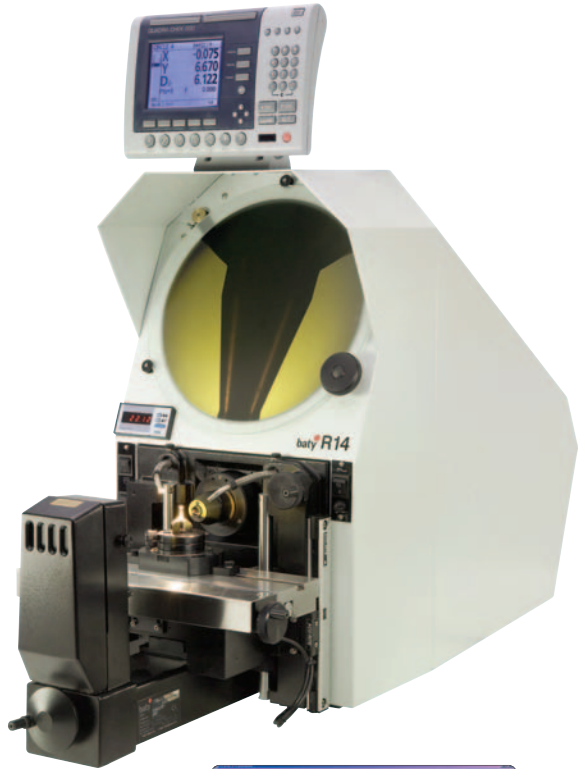
R14 Profile Projector

Standard features:

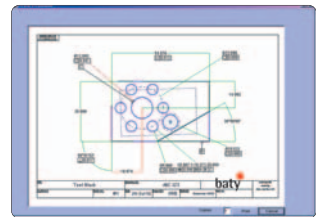
- 0.5 micron X, Y measuring resolution
- 340mm (14") screen with 90 degree crosslines and chart clips
- Profile illumination with halogen lamp and green filter
- Lens magnification choice: x10, x20, x25, x50, x100
- Surface illumination (fibre optic)
- Helix adjustment $\pm 7^\circ$ of light source for accurate thread form projection
- Cast iron workstage with machined slot for holding accessories
- Workstage measuring range of 175mm (7") x 100mm (4")
- Digital angle measurement to 1 minute of arc
- Digital clock function
- All steel body

Optional features:

- Internally fitted automatic edge sensor (*shown*)
- Swing-over lamphouse to allow clear access to the workstage
- Cabinet stand ensures a solid base and provides storage
- Other options include foot switch control and printer
- Full work holding accessories (page 28)
- Extended lamphouse for larger components



Fusion-2: PC software option shows measured part as a dimensional drawing



Measuring Option Fusion-2

Measuring Options:

XLS: A simple 2 axis digital readout for X and Y measurement

GXL: Incorporates geometric functions for skew alignment, angle, radii measurement, pitch circle diameter and construction of intersect points etc.

GXL-E: As GXL with screen mounted automatic profile edge sensor. As an option the sensor can be fitted internally.

Fusion-2: PC based measuring system produces dimensioned part drawing. Includes geometric tolerancing, SPC, full reporting with pass/fail analysis, auto Excel™ link and auto sequence program.

Fusion-2E: As Fusion but supplied with screen mounted automatic edge detector. As an option the sensor can be fitted internally.

GXL-5205: PC based measuring system features geometric construction, tolerancing, part sequence program, auto storage or measured features, measure magic and capture scanning mode.